

**KONA
HOSPITAL FOUNDATION**

The Kona Hospital Foundation is dedicated to improving Kona Community Hospital for the entire community. They fund medical technology, expanded services and enhanced facilities that would otherwise be unavailable.



HOLIDAY HOUSE

Let Your Holidays Begin Here!



The Kona Community Hospital Auxiliary is holding it's annual holiday extravaganza, *Holiday House—Christmas At The Volcano* on November 29 & 30 and December 1, 7 and 8 from (9am—5pm). This is a highlight of the holiday season where you'll find art, antiques and gifts. The crisp, cool mountain of Kilauea creates the perfect holiday atmosphere. 99-1949 Pukeawe Circle, Volcano Village. (From Highway 11, turn onto Pi'i Mauna Drive)

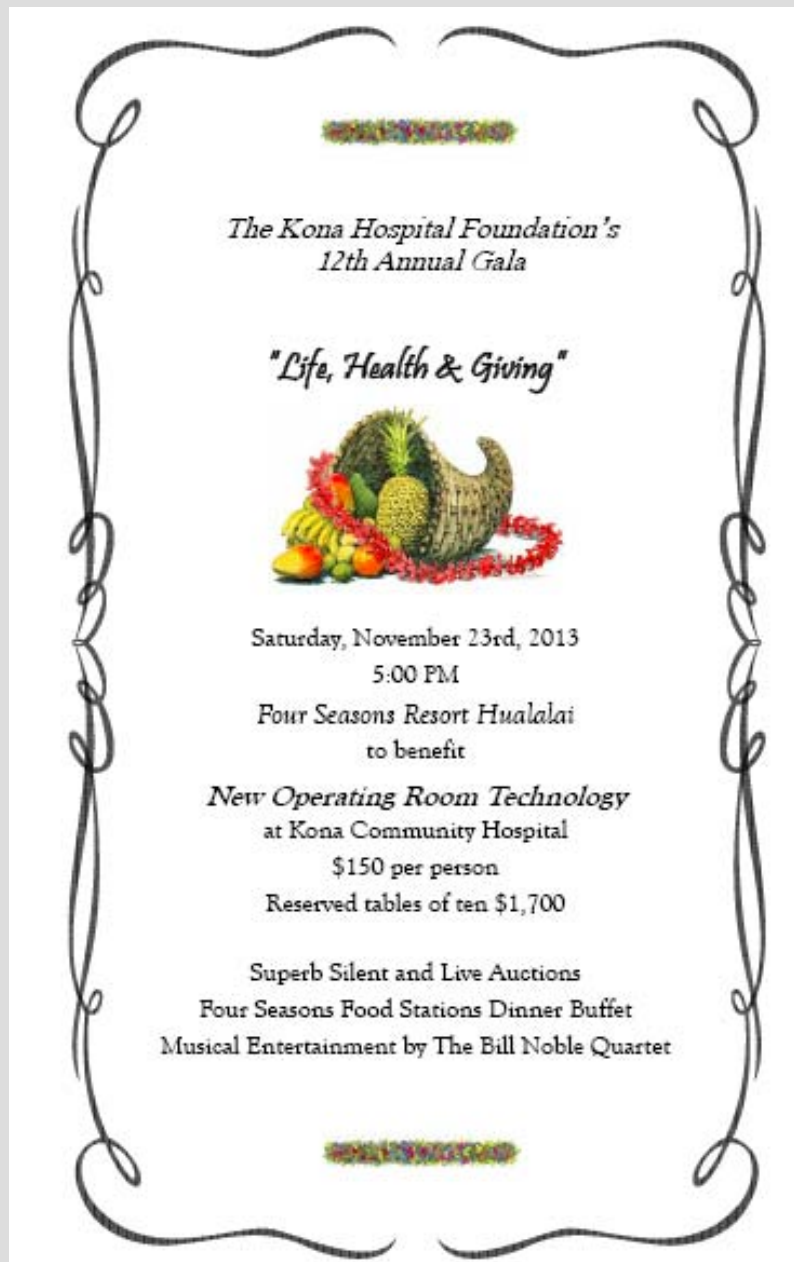
NOTE: Auxiliary is seeking donations for this event. Call Christine Hoffman for information@ 938-9694.

GIFT SHOP NEWS



The Gift Shop is receiving new shipments every week, so start working on your Christmas list. Check out the Radz display. We're told that our Gift Shop has the only ones in town...and prices are cheaper than online. Also, watch for our Christmas sale in early December. Remember all profits go to the KCH Auxiliary which supports hospital patients, employees, community and nursing scholarship.

For more information, call 322-4577
or go to www.kchauxiliary.org



For more information, please contact the Kona Hospital Foundation at 322-4587 or go to www.khfhawaii.org

Published by Marketing Department | 322-6960 | jdonovan@hhsc.org

Talk Story is a publication of Kona Community Hospital. Please submit any suggestions, comments, and news information to Judy Donovan in the Marketing

Talk Story



Summer / Fall 2013 Volume 8 Issue 2

The official newsletter for Kona Community Hospital employees, medical staff, volunteers and affiliates.

KCH Installs New CT Scanner

Contributed by Pat Kalua

Kona Community Hospital is upgrading to a brand-new CT scanner! This is exciting news, but will require some flexibility to be successful. Moving out the old machine and renovating the room to accommodate the new machine will take a number of weeks, but will be well worth the work and the wait.

During this time we want to continue to provide the best care possible without transporting or directing our patients to another facility so we will utilize a mobile CT van. **This van is scheduled to arrive during the first week of November. It will be parked in front of the SSB in the parking stalls north of the breezeway between the SSB and the Admitting area.**



The new Somatom Definition AS 64 CT Scanner
will be installed by February, 2014

Once the van arrives, the CT and Imaging staff will be trained in its use and will service a few patients in the van to be sure all is in order. Once the old CT is taken out of service (tentatively planned for November 13), all CT scanning will occur in the van.

Inpatients will be taken to the van through the ambulance bay. A dedicated security officer will monitor traffic to ensure patient safety. The KCH Maintenance department has hired a contractor to erect a small ramp from the ambulance bay driveway up to the sidewalk. They will also build a cover over the sidewalk between with ambulance bay roof and the mobile CT van. In addition, we are in the process of obtaining a motorized gurney exclusively for patient transport to the mobile CT. If all goes as planned, the new CT will be operational by February 17, 2014.

As with any project of this magnitude, there are many “moving parts” and the “devil is in the details.” Many thanks go out to Contracts, Maintenance and Imaging and, of course, to all our providers, staff and patients for their flexibility and understanding. More details will be forthcoming but if you have any questions or concerns, please call Melody Sullivan at ext. 5872.

The Talk Story Breaking News: The KCH Trauma Center is collaborating with PATH (Peoples Advocacy for Trails Hawai'i) to increase awareness of helmet safety for children. The Trauma Center donated 1200 new bike helmets to PATH's Bicycle education program for 4th graders. The helmets will be distributed throughout the 2013/14 school year. The donation helps to satisfy a Trauma Level III designation requirement. In addition, thanks to the helmets, "our keiki can exercise safely while riding their bicycles...and build safe bicycle riding practices," says Wendi Wagner Trauma Program Manager. The Trauma Center has received touching Mahalo notes including photos of 4th graders wearing their new helmets.



MEDICAL STAFF NEWS

The KCH Medical Staff currently consists of 201 physicians representing 27 specialties.

New KCH Physicians:

John Vidrih, MD—Hospitalist
Danielle Potter, MD— OBGyn
Adam Ankrum, DO—Emergency Medicine

In June, Sound Physicians began providing comprehensive hospitalist services to KCH. Sound Physicians will employ a team of six physicians and a dedicated hospitalist RN. Their approach to hospital medicine with proven tools and workflows will allow for the best possible care of our patients.

Tiger Team formed to Prevent Falls

For the last year, the KCH Falls Committee has been monitoring patient fall rates and looking into the reasons a patient might fall. Many patient falls are caused by a combination of factors, such as, medication side effects, time of day, weakness, confusion and illness. But how can we prevent falls? One idea was to form a "Tiger" team. What in the world is a "Tiger" team you ask? It is a group of "subject matter experts" who come together for one to two meetings to make suggestions for resolving a problem or improving a process.

In October, the Falls Tiger Team members came together to read articles about "best practices," talk about current practices and brainstorm methods to prevent patient falls and enhance patient safety. Although KCH has implemented the "Falling Star Volunteer Safety Program" and bedside reporting successfully on Med-Surg, falls will always require constant monitoring and intervention.

The "Tiger" Team has come up with some great ideas and suggestions, so stay tuned!



Falls Tiger Team members: Eleanor Kaupu, Khristine Pratt, Tammy Kaawe, Cesar Rosabia and Pat Kalua

KCH GOES PINK TO SUPPORT NATIONAL BREAST CANCER AWARENESS MONTH

Kona Community Hospital had its annual Pink Shirt Day on Tuesday, October 15. This day represents the hospital's support for National Breast Cancer Awareness Month in October. Hospital staff was encouraged to wear pink to work as a sign of recognition of the impact that breast cancer has in our community.

Wearing pink in October has gained popularity as support for breast cancer awareness. This year, Kona Community Hospital focused on the theme, "Fight, Cure, Win." Over 100 hospital employees dressed up in pink KCH t-shirts to show their support.



EMPLOYEE OF THE MONTH—2nd Quarter



April
Bert Onaka



May
Stephanie Irwin, RN



June
Brooke Kahalioumi

Teamwork

KCH Employees Volunteer in TDAP Vaccine Campaign

Kona Community Hospital employees recently participated in a number of collaborative clinics that offered free tetanus, diphtheria and pertussis (TDAP) vaccines to adults in the Ka'u and South Kona communities.

The idea for the vaccine campaign was born out of the Tropic Care 2013 free clinics in Ka'u where Councilwoman Brenda Ford volunteered to assist while KCH's Medical Van director Jackie Murray administered 200 TDAP vaccines.

The first clinic was coordinated by Ford and Murray in collaboration with clinical staff and volunteers from Kona Community Hospital. The all-day clinic was held at the Christ Church Episcopal on Konawaena School Road in Kealahou on July 20th.

The remaining vaccines were given over the summer at churches in Pahala, Ocean View and South Kona as well as on the Medical Van in both Ka'u communities. In all, 600 vaccines were administered to community residents.

"We lose immunity to the TDAP vaccine by high school," said Murray. Pertussis, also known as whooping cough, is not generally deadly to adults or adolescents. However, it can be deadly to infants and children. "It is very important to vaccinate adults to protect children in our community from being infected," Murray concluded.

The opportunity for a free vaccine campaign presented itself when KCH Infection Prevention Director, Lisa Downing accepted a generous offer of TDAP vaccines from the Hawaii Department of Health.



**3.4 Upgrade:
IMPORTANT NEWS!**

On November 14th, we will go-live with the 3.4 upgrade to the EMeRGE system. Soarian Clinicals, Soarian Financials and Pharmacy are being upgraded. They provide key features to help us achieve 2014 Stage 1 Meaningful Use. The 3.4 upgrade will enhance overall usability of these systems and add functional enhancements to improve how we work – allowing for better outcomes. Web-based training is in progress. Our Education Department has set up classes in HealthStream. Providers have been given a link to their training video and a link for Nursing education has been posted to the KCH intranet. See more details on the 3.4 Update Flyer or the Emerge Bulletin Board. Talk with your department managers about any questions you may have.

New Ohana Members

April:

Simone Abrams Ruf, Admitting
Luisa Paredes, Pharmacy
Maria "Lupita" Tapia, Admitting

May:

Kelly Goddard, ES
Eric Prado, ES
Anne Broderson, Critical Care Float
Dominique Goodson, HIM
Kingsley Crabtree, Admitting
Shelba Cortez, Nursing Admin.
Khristine Pratt, QI/Risk Management
Jennifer C. Garcia, Rehab Services
Robin Canda, Admitting
Paula Leong, Admitting

June:

Carmen Malinis, SNF
Gary Pearson, ES
Carla Schlarb, Float
Brent Northrup, Oncology
Geraldine Mettao, Float
Crystal Matsuo, Float
Debra Chapman, Float
Ritsuko Alford, Med Surg
Steven Bonafede, RT
Helenita Furubayashi, Nursing Admin
Nikolay, Krasovskiy, Nursing Admin
Jenna Quinn, Behavioral Health
Erick Magsi, RT

July:

No orientees this month

August:

Marie Hickey, Med Surg
Patricia McGhee, ES
Donald Duval, IS
Margaret Thorman, Behavioral Health
Toy Saelee, Oncology
Monica Yap, ES
Rosemary Keith, SNF
Mary Lou Miles, Behavioral Health

September:

Anthony Carter, Surgical Svcs.
Russell Ventenilla, Surgical Svcs.

###

Did you know...

Birthday Lunch—

is a celebration that will occur the first Friday of every month from Noon to 1 p.m. with CEO Jay Kreuzer. If your birthday falls within that month, you are invited.