

Imaging Department Updates

January 10, 2024

Outpatient Imaging Services Operating Hours

X-Ray, Ultrasound, MRI, CT Scan, ECHO

- Monday to Thursday: 7:00 AM – 4:30 PM
- Friday & Saturday: 7:00 AM – 3:30 PM

Nuclear Medicine

- Monday to Friday: 7:00 AM – 3:30 PM

Note: Services are closed on Sundays



NEW! DEFINITY – Image Enhancing Agent for Echocardiograms

Our imaging department has recently incorporated DEFINITY, an echocardiogram enhancement agent. DEFINITY significantly improves the visualization of the heart, aiding in precise cardiac diagnosis and effectively altering patient management strategies. Its use is particularly beneficial in patients with suboptimal echocardiograms, enhancing the visibility of the left ventricular chamber and endocardial border. This advancement not only improves diagnostic accuracy but also reduces resource utilization and per-patient expenses. Physicians should be aware of its contraindications, particularly in patients allergic to perflutren lipid microsphere or related components. Physicians can request that DEFINITY be used, otherwise, the need will be assessed by the tech using the initial images from the study.

Low Dose CT Chest Lung Screening Now Available

In line with the latest guidelines from Centers for Medicare and Medicaid Services, KCH is now qualified to offer low dose CT chest lung screenings. This important diagnostic tool is now available for patients who meet the necessary criteria. The criteria includes:

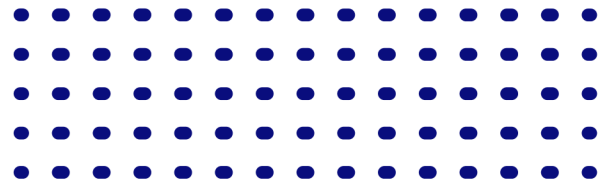
- A referral for lung cancer screening Low Dose CT Scan
- Age Between 55 and 77
- No signs or symptoms of lung cancer i.e. hemoptysis, chest pain with deep breathing, shortness of breath, hoarseness, wheezing, chronic cough, rapid weight loss, or repeated lung infections
- Smoking history at least 30-pack years
- Current smoker or quit within past 15 years

We invite you to take advantage of this opportunity to enhance your patients' care by referring those who qualify for this lung screening method, ensuring early detection and management of lung conditions.

MSK Ultrasounds Now Available at KCH

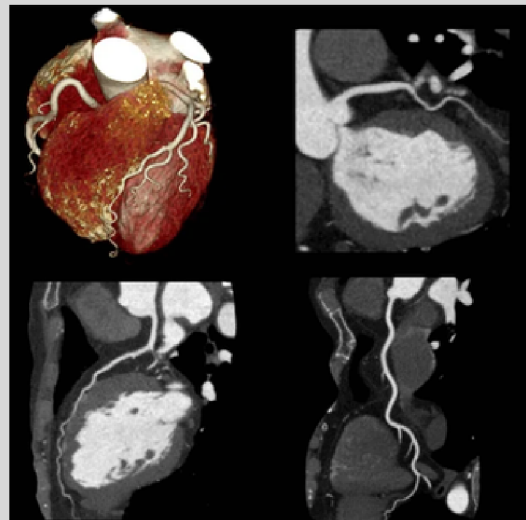


We are excited to announce that Michael Poulton has joined the Kona Community Hospital Imaging Department. In his permanent role, Michael brings his wealth of knowledge, allowing us to offer musculoskeletal (MSK) ultrasounds to our West Hawaii community. Common reasons to order MSK ultrasounds may include patients with muscle tears, ligament damage, tendon pains, soft tissue bleeding, and more!



COMING SOON! Cardiac CTA Exams

KCH is enhancing its medical services by introducing Cardiac CTA exams, aligning with the cardiac best practices established by QHS. This collaborative effort with QHS is meant to enhance patient care through more informed and coordinated decision-making, especially when care needs to be continued at QHS. We aim to begin offering these tests in early 2024.



For more information on the Kona Community Hospital Imaging Department, visit our website at <https://kch.hhsc.org/services/imaging>.

79-1019 Haukapila Street, Kealahou, HI 96750

808-322-4490