



INFECTION CONTROL RESPONSIBILITIES

KCH will provide and initially install:

- all barriers,
- air scrubbers/negative air machines,
- sticky mats,
- filters and plastic necessary to fulfill the infection control requirements designated by the infection control risk assessment performed internally by KCH prior to the beginning of construction

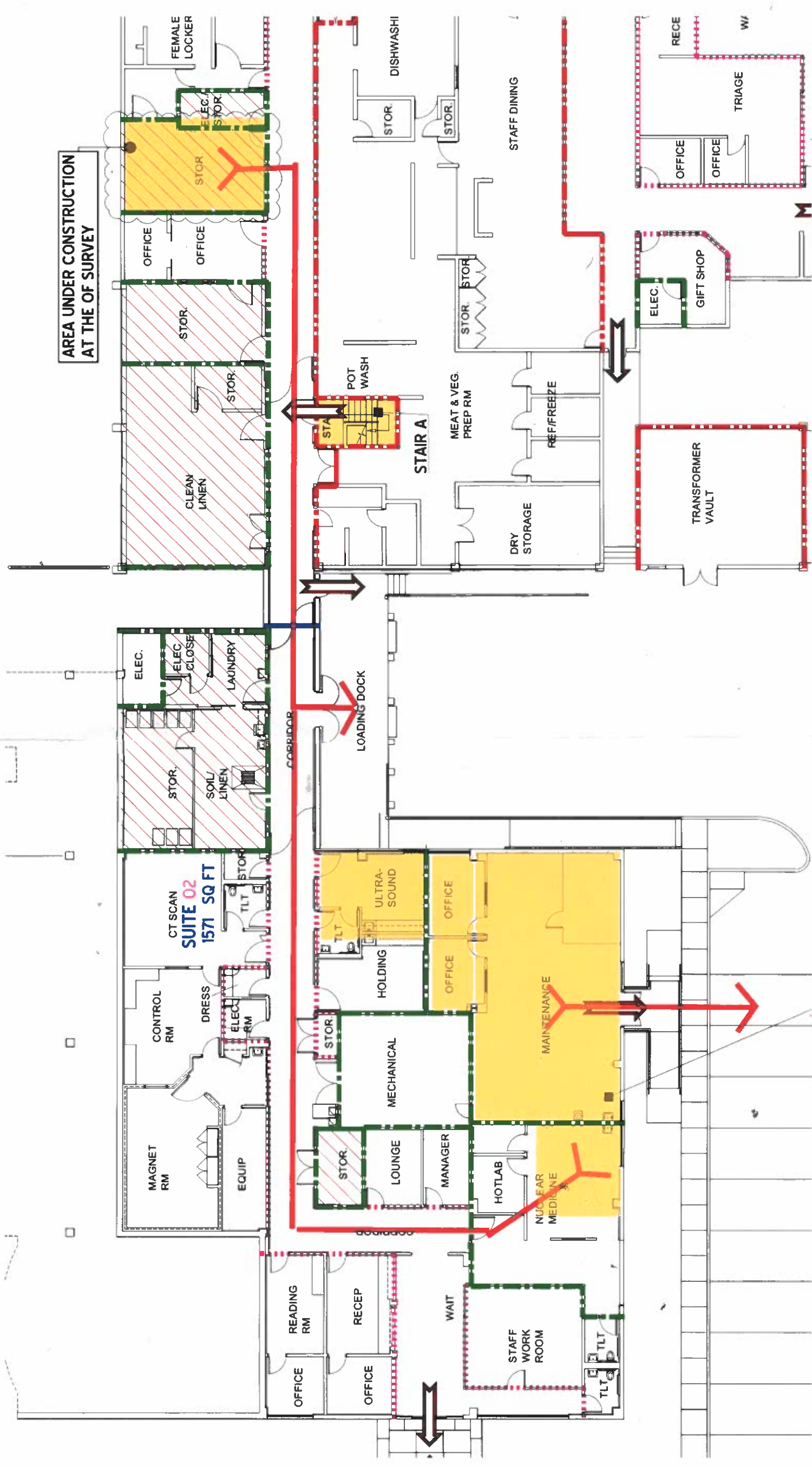
The contractor will be responsible for disposable items such as:

- trash bags,
- cleaning supplies
- bunny/tyveck suits to be used in demo

Contractor will also be responsible for the daily maintenance/cleanliness of the space in accordance with the contractor handbook to maintain infection control compliance. This will include:

- cleaning/mopping of the construction area,
- changing air scrubber filters,
- pulling up sticky mat layers,
- disposing of rubbish daily as well as any other contractor requirements referenced in the contractor handbook.

KCH will provide a dumpster located at the current Maintenance shop location for contractor use. Please notify KCH maintenance if dumpster is full. KCH has designated an approved entrance and exit route for contractor use to minimize impact to clinical services. Map is attached for reference.



AREA UNDER CONSTRUCTION
AT THE OF SURVEY

CT SCAN
SUITE 02
1571 SQ FT

CORRIDOR

LOADING DOCK

STAIR A

M